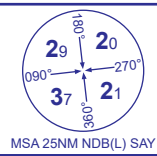


INSTRUMENT APPROACH CHART - ICAO

STORNOWAY
NDB(L)
RWY 18
(ACFT CAT A,B,C,D)

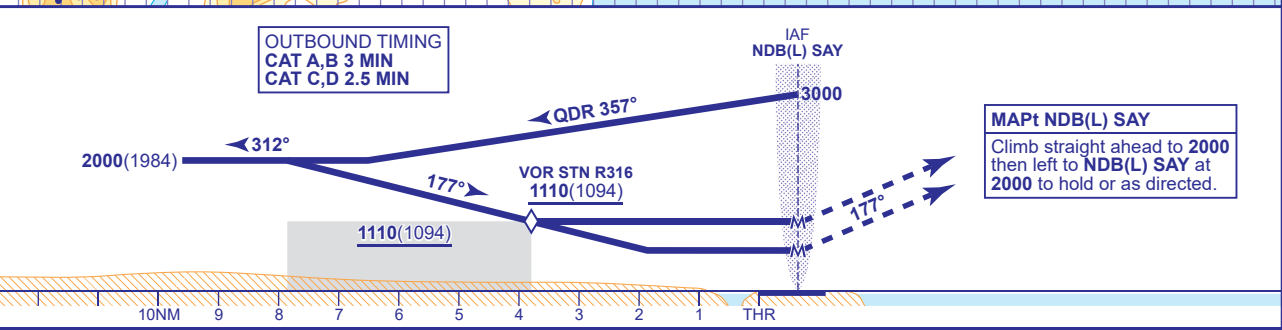


APP	119.480	STORNOWAY APPROACH	AD ELEVATION	26
TWR	119.480	STORNOWAY TOWER	THR ELEVATION	16
AFIS	119.480	STORNOWAY INFORMATION	OBSTACLE ELEVATION	1233 AMSL (1217) (ABOVE THR)
ATIS	115.100	STORNOWAY INFORMATION	BEARINGS ARE MAGNETIC	

TRANSITION ALTITUDE
3000



VAR 2.9°W - 2022
Annual Rate
of Change 0.24°E



Aircraft Category	A	B	C	D
OCA (OCH)	NO DME	1110(1094)	1110(1094)	1110(1094)
	WITH STN	610(594)	610(594)	610(594)
	Total Area	1120(1094)	1120(1094)	1120(1094)
VM(C)OCA (OCH AAL)	East of RWY 18/36	1120(1094)	1120(1094)	1120(1094)

ALTERNATIVE PROCEDURE EXTENDED HOLDING PATTERN
Overhead NDB(L) SAY (IAF) at 3000(2984) fly outbound leg of the holding pattern for 3 MIN (CAT A,B) or 2.5 MIN (CAT C,D) descending to 2000(1984), turn right onto FAT and continue as for basic procedure.

AIRCRAFT ABLE TO RECEIVE VOR STN
Aircraft able to receive VOR STN may continue to lower MDH after passing VOR STN step-down R316 inbound.

NOTE 1 Lowest altitude to commence procedure from hold is 2000.
2 Initial approach from VOR/DME STN is detailed on AD 2-EGPO-8-4.

CHANGE (6/25): VM(C)OCA(OCH AAL) TOTAL AREA AND EAST OF RWY 18/36 ALL CAT.